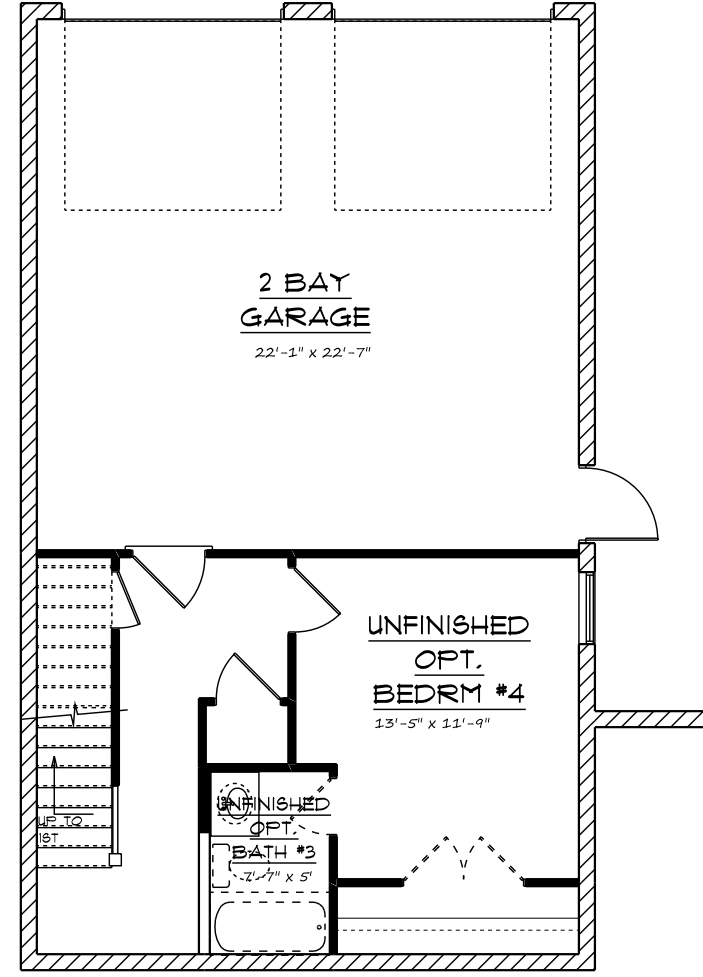


BASEMENT FLOOR LAYOUT



Superior Development, LLC

Jason Leonard - President
615-519-3412 (Cell) / 615-420-6160 (Office)
<http://www.Superior.Build>
<http://www.facebook.com/superiordevelopmentllc>
#BuildBySuperior

Scale: 1/4" = 1'-0"
24" x 36" PAPER

Scale: 1/8" = 1'-0"
11" x 17" PAPER

MP-1
BASEMENT

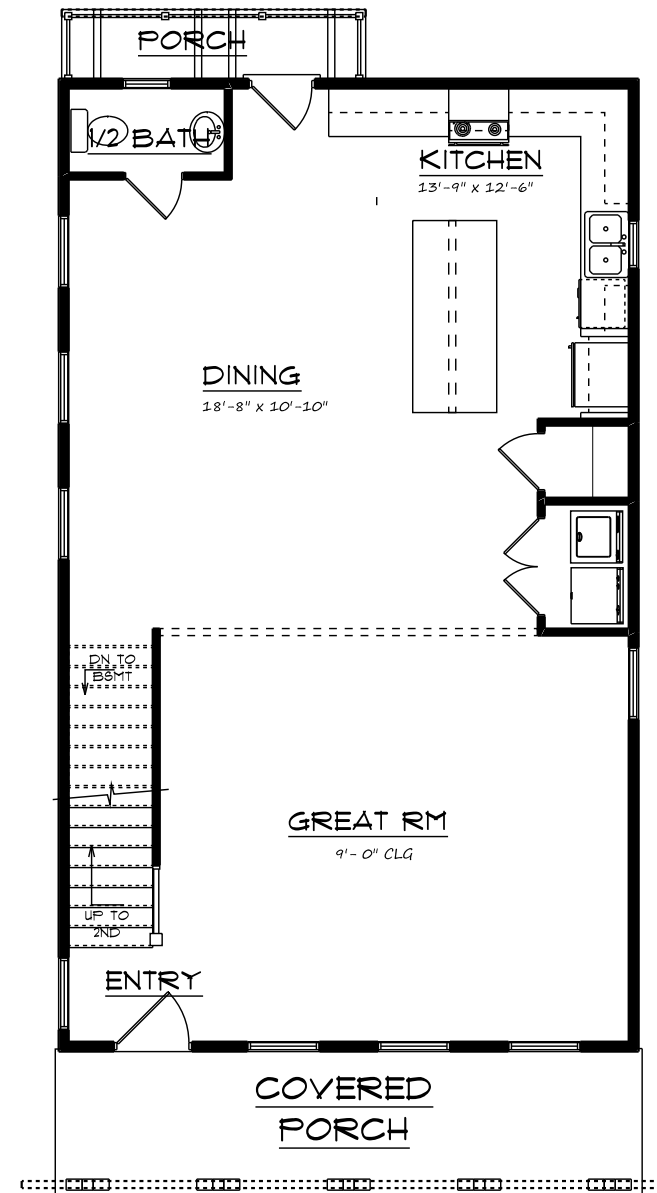
MAGNOLIA EAST

UNIT 9
MODEL G-1(f)

THESE DRAWINGS ARE FOR DESIGN INTENT ONLY.
IT IS THE CONTRACTOR'S RESPONSIBILITY TO ENSURE
CONSTRUCTION MEETS OR EXCEEDS ALL CODES.
IT IS THE CONTRACTOR'S RESPONSIBILITY TO COORDINATE
ALL MECHANICAL, STRUCTURAL, ELECTRICAL AND STEELERS
WITH THE FRAMEWORK AND AESTHETICS OF THIS HOME.

FIRST FLOOR LAYOUT

AREA SCHEDULE	
NAME	AREA
Basement Floor	191 sq ft.
First Floor	974 sq ft.
Second Floor	976 sq ft.
TOTAL	2141 sq ft.
Garage	552 sq ft.
Front Porch	133 sq ft.
Rear Porch	36 sq ft.
Unfinished	233 sq ft.



Superior Development, LLC

Jason Leland - President
 615-518-3412 (Cell) 615-420-6160 (Office)
<http://www.SuperiorBuild.com>
 #BuiltBySuperior

Scale: 1/4" = 1'-0"
 24"x36" PAPER

Scale: 1/8" = 1'-0"
 11"x17" PAPER

MP-2

FIRST FLOOR

MAGNOLIA EAST

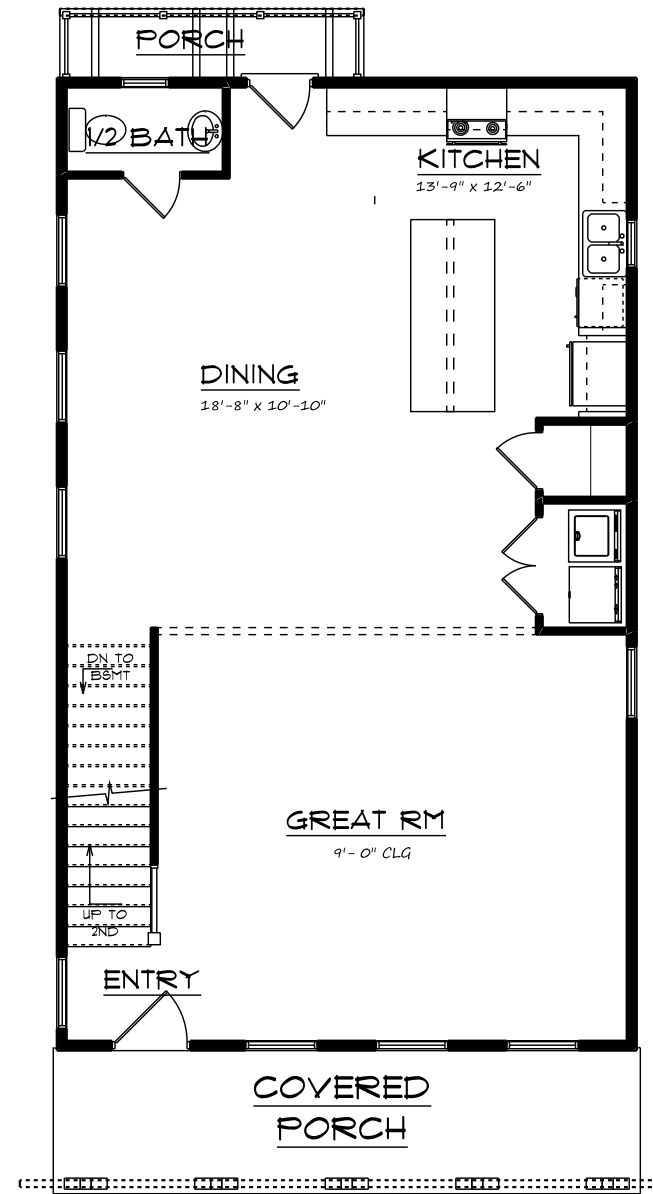
UNIT 9
 MODEL G-(f)

THESE DRAWINGS ARE FOR DESIGN INTENT ONLY.
 IT IS THE CONTRACTOR'S RESPONSIBILITY TO ENSURE
 CONSTRUCTION MEETS OR EXCEEDS ALL CODES.

IT IS THE CONTRACTOR'S RESPONSIBILITY TO COORDINATE
 ALL TRADES, STRUCTURAL, ELECTRICAL AND SYSTEMS
 WITH THE FRAMEWORK AND AESTHETICS OF THIS HOME.

SECOND FLOOR LAYOUT

AREA SCHEDULE	
NAME	AREA
Basement Floor	191 sq ft.
First Floor	974 sq ft.
Second Floor	976 sq ft.
TOTAL	2141 sq ft.
Garage	552 sq ft.
Front Porch	133 sq ft.
Rear Porch	36 sq ft.
Unfinished	233 sq ft.



MAGNOLIA EAST

UNIT 9
MODEL G-(f)

Superior Development, LLC

Jason Lenard - President
615-518-3412 (Cell) 615-420-6160 (Office)
http://www.superiorbuild.com
http://www.facebook.com/superiordevelopmentllc
@superiorbuild

Scale: 1/4" = 1'-0"
24"x36" PAPER

Scale: 1/8" = 1'-0"
11"x17" PAPER

MP-3
SECOND FLOOR

THESE DRAWINGS ARE FOR DESIGN INTENT ONLY.
IT IS THE CONTRACTOR'S RESPONSIBILITY TO ENSURE
CONSTRUCTION MEETS OR EXCEEDS ALL CODES.
IT IS THE CONTRACTOR'S RESPONSIBILITY TO COORDINATE
ALL MECHANICAL, STRUCTURAL, ELECTRICAL, AND SYSTEMS
WITH THE FRAMEWORK AND AESTHETICS OF THIS HOME



FRONT ELEVATION



LEFT ELEVATION

ELEVATIONS - FRONT / RIGHT

THESE DRAWINGS ARE FOR DESIGN INTENT ONLY.
IT IS THE CONTRACTOR'S RESPONSIBILITY TO ENSURE
CONSTRUCTION MEETS OR EXCEEDS ALL CODES.
IT IS THE CONTRACTOR'S RESPONSIBILITY TO COORDINATE
ALL MECHANICAL, STRUCTURAL, ELECTRICAL, AND SYSTEMS
WITH THE FRAMEWORK AND AESTHETICS OF THIS HOME.

MAGNOLIA EAST

UNIT 9
MODEL G-1(f)

Superior Development, LLC

Jason Lenard - President
616-979-3412 (Cell) 616-420-6160 (Office)
<http://www.superiorbuild.com>
<http://www.facebook.com/superiordevelopmentllc>
#BuildBySuperior

Scale: 1/4" = 1'-0"
24"x36" PAPER

Scale: 1/8" = 1'-0"
11"x17" PAPER

MP-4

FRONT/RIGHT
ELEVATIONS



REAR ELEVATION



RIGHT ELEVATION

ELEVATIONS - REAR / LEFT

Superior Development, LLC

Jason Lenard - President
 615-578-3412 (Cell) 615-420-6160 (Office)
<http://www.superiorbuild.com>
<http://www.facebook.com/superiordevelopmentllc>
 @BuildItSuperior

Scale: 1/4" = 1'-0"
 24"x36" PAPER

Scale: 1/8" = 1'-0"
 11"x17" PAPER

MD-5

REAR/LEFT
 ELEVATIONS

MAGNOLIA EAST

UNIT 9
 MODEL G-1(f)

THESE DRAWINGS ARE FOR DESIGN INTENT ONLY.
 IT IS THE CONTRACTOR'S RESPONSIBILITY TO ENSURE
 CONSTRUCTION MEETS OR EXCEEDS ALL CODES.
 IT IS THE CONTRACTOR'S RESPONSIBILITY TO COORDINATE
 ALL MECHANICAL, STRUCTURAL, ELECTRICAL, AND SYSTEMS
 WITH THE FRAMEWORK AND AESTHETICS OF THIS HOME.